



uni jet

Электрические счетчики Socomes Countis E - брошюра на продукцию. Юниджет

Постоянная ссылка на страницу: <https://www.uni-jet.com/catalog/commutation/schetchiki/>





COUNTIS E

Active and reactive energy meters

32 A, 63 A and 80 A

with MODBUS/M-BUS communication



-
- MULTI-PROTOCOL COMMUNICATION
 - MID TAMPER-PROOF METERING
 - MULTI-TARIFF METERS
-

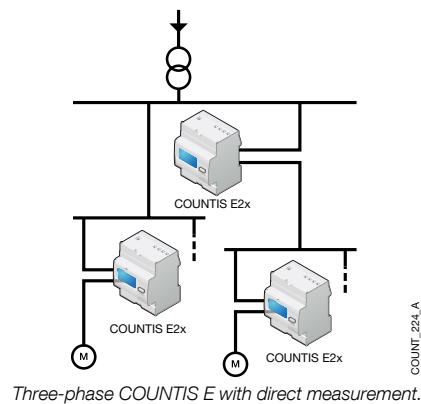
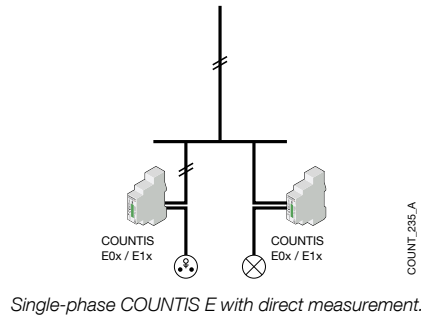
As an important first step toward making energy savings, energy meters no longer simply take consumption readings. They take highly accurate measurements whilst giving access to other electrical parameters needed for managing energy costs. Designed for two-phase and three-phase networks, COUNTIS E are active and reactive energy meters with MODBUS or M-BUS RS485 communication, available depending on the model selected.

COUNTIS E

Active and reactive energy meters 32 A, 63 A and 80 A with MODBUS/M-BUS communication

Benefits

- Multi-protocol communication**
 To easily centralise consumption, COUNTIS E units are equipped with an RS485 communication output offered with two protocols: MODBUS or M-BUS. In addition to these centralisation functions, RS485 communication allows remote configuration of the meters.
- MID tamper-proof metering**
 COUNTIS E comply with the MID directive, which guarantees you accuracy and reliability when metering, an indispensable function for applications re-invoicing energy. The products feature tamper-proof components to prevent fraud.
- Multi-tariff meters**
 Two tariffs are available via a pulse input or a communication protocol to assign energy metering to different time slots (high and low demand hours) or different sources (normal, backup). This function is for a more detailed monitoring of energy consumption.



Applications

The COUNTIS E range perfectly meets the needs and constraints of any electrical installation requiring active and reactive energy metering: industry, healthcare buildings, data centres, infrastructures, high-rise buildings, etc.

Conformity to standards

- IEC 62053-21 class 1
- EN 50470-1
- EN 50470-3

COUNTIS E

Model	References Standard version	References MID version
Single-phase active energy meters - direct 32 A - MODBUS	E03: 4850 3029	E04: 4850 3030
Single-phase active and reactive energy meters - direct 80 A - MODBUS	E13: 4850 3031	E14: 4850 3032
Single-phase active and reactive energy meters - direct 80 A - M-BUS	E15: 4850 3033	E16: 4850 3034
Three-phase active and reactive energy meters - direct 63 A - MODBUS	E23: 4850 3035	E24: 4850 3036
Three-phase active and reactive energy meters - direct 63 A - M-BUS	E25: 4850 3037	E26: 4850 3038

HEAD OFFICE

SOCOMECC GROUP

S.A. SOCOMECC capital 10 816 800 €
 R.C.S. Strasbourg B 548 500 149
 B.P. 60010 - 1, rue de Westhouse
 F-67235 Benfeld Cedex - FRANCE

INTERNATIONAL SALES DEPARTMENT

SOCOMECC

1, rue de Westhouse - B.P. 60010
 F - 67235 Benfeld Cedex - FRANCE
 Tel. +33 (0)3 88 57 41 41
 Fax +33 (0)3 88 74 08 00
 info.scp.isd@socomec.com

YOUR DISTRIBUTOR

www.socomec.com

To find out more...

Visit our website:
www.socomec.com/en/countis



COUNTIS E range

- For currents > 100 A (three-phase networks):**
- COUNTIS E4x (modular product),
 - COUNTIS E5x (panel mounted product),
- For currents ≤ 100 A (single-phase or three-phase network):**
- COUNTIS E0x for single phase network,
 - COUNTIS E1x for single phase network,
 - COUNTIS E2x for three phase network,
 - COUNTIS E3x for three phase networks,
 - COUNTIS E63 with 3 single-phase meters in one case.

Also available



Compile and make sense of your energy data and display the results. With VERTELIS software, you can easily identify relevant indicators and reach your energy efficiency targets.

